

West End Community Council Update

from West End Ward councillor
Fraser Macpherson - November 2009

Latest West End Updates ...

SCHOOL BUSES : I recently received concerns about Harris Academy pupils who live in the area around the western end of Perth Road (west of the school) finding difficulty being able to get on a bus to/from school as they are so busy. I have received the following feedback from the Director of Travel Dundee (National Express Dundee) :



"Fraser,

All of the buses which we schedule as School services are general registered services and available to all members of the public. We do not have the school bus contracts for any of the public authority schools in Dundee.

There are a number of pupils who have passes for our buses provided by the education department and these numbers are built into our service planning. Across the city there has been an increase in the number of pupils travelling by bus. As far as we are aware these additional passengers are pupils not entitled to free school transport.

In order to accommodate this we put the largest buses possible on the busy school routes. This is a juggling act as we have every available bus out for the evening school run.

We keep in regular contact with the Transport team on school bus services and as far as we are all aware the problems experienced at the start of term this year have abated as they usually do once after school activities start up.

We had inspectors up at the Harris a fortnight ago all the pupils seeking to travel on bus that evening were accommodated. The numbers do considerable fluctuate from day to day due to a variety of other reasons. Wet weather also causes many additional pupils to travel by bus.

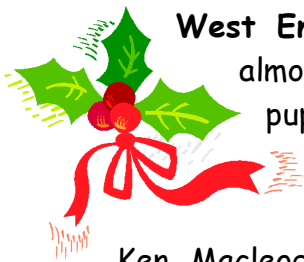
Unfortunately there will always be peaks which we cannot accommodate but if there is a regular ongoing problem can you let us know and we will discuss the issue with the DCC transport team and see what can be done."

SCHOOL BUSES - continued :

The Head of Transportation at Dundee City Council has also advised :

"... the National Express Dundee service 9x departs at xx39 thus missing the school finish time. However there are three Stagecoach buses 77, 16 and 16a which leave between 1545 and 1556."

I have asked parents to keep me advised of any problems in the forthcoming weeks and I'll take these up with the bus companies and with the Head of Transportation at the City Council.



West End Christmas Week 2009 : The Christmas Week preparations are almost complete. Starting with a community fayre and balloon launch for P1 pupils from local primary schools on Saturday 21st November, the week also includes the children's concert, lights switch-on, carnival and fireworks on Tuesday 24th November.

Ken Macleod of Radio Tay will switch on the West End Christmas Lights, ably supported by "Penny Pilic" and "Betty Bampot" from Downfield Musical Society's "Dick Whittington" pantomime.

There's also a "Fireworks Safety" drawing competition for P7 pupils, a Best Shop Window Competition (with particular thanks to the Community Council!) and a shoppers' prize draw.

Sign : A number of the residents at Pinegrove Gardens, the housing in part of Osborne Place, have complained to me about the lack of adequate signage to their properties - 10-20 evens ; 19-33 odds. As a result, there are problems with some deliveries to households.

Following my request, the City Council has agreed to improve the signage here and this will be installed in the near future.

Homebase : Last week, I received concerns that parts of the hoardings around the former Homebase site in Riverside Drive had been damaged and had fallen/were missing. I contacted the administrators, PricewaterhouseCoopers, who responded last Wednesday as follows :

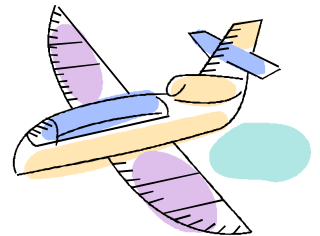
"We instructed the necessary repair works and have now been notified by our agent that these were completed earlier today."

Airport Parking Charges : The Manager at Dundee Airport has advised me that the Dundee Airport Board has now firmly decided to introduce car parking charges at the airport from the end of this month.

The possibility of such charges was raised at the recent Airport Consultative Committee I attended and although I made clear that I have no objection to the principle of introducing some charging to ensure no abuse of the parking facilities by non-airport users (particularly since the 8X bus service started stopping at the airport), I also said that that such charges should **not** act as a disincentive to users of the airport.

Those flying from Dundee Airport should, in my opinion, have their parking costs reimbursed on production of their boarding pass to ensure that flying from Dundee remains an attractive alternative to travelling to Edinburgh, Aberdeen or Glasgow.

I was therefore a bit concerned to learn that the update from the Airport Manager appears to give no reassurance that airport passengers will have their parking charges reimbursed and I have written to him seeking clarification and an assurance that such reimbursement arrangements will be made.



Here's the car parking notice from Dundee Airport :

Important Customer information : Car parking charges will be implemented at Dundee Airport from the week commencing 30th November 2009. Car park 1 will be a short stay car park with a maximum stay of 2 hours.

Car parks 2 & 3 will be long stay car parks. This will be managed on a ticket entry and payment on exit system. The payment machine is adjacent to the terminal building.

The car parking charges will assist the airport in retaining all the services it currently provides.

Car park charging schedule will be;

Short stay, pay and display £1.40 per hour. (Max 2 hours)

Car parks 2 & 3 Long stay by ticket barrier;

30 minutes to 4 hours - £3.00

4 hours to 6 hours - £4.20

6 hours to 8 hours - £5.00

Day rate (more than 8 hours) - £5.50

5 day rate - £20.00

7 day rate - £28.00 (Lost ticket charged at £35.00)